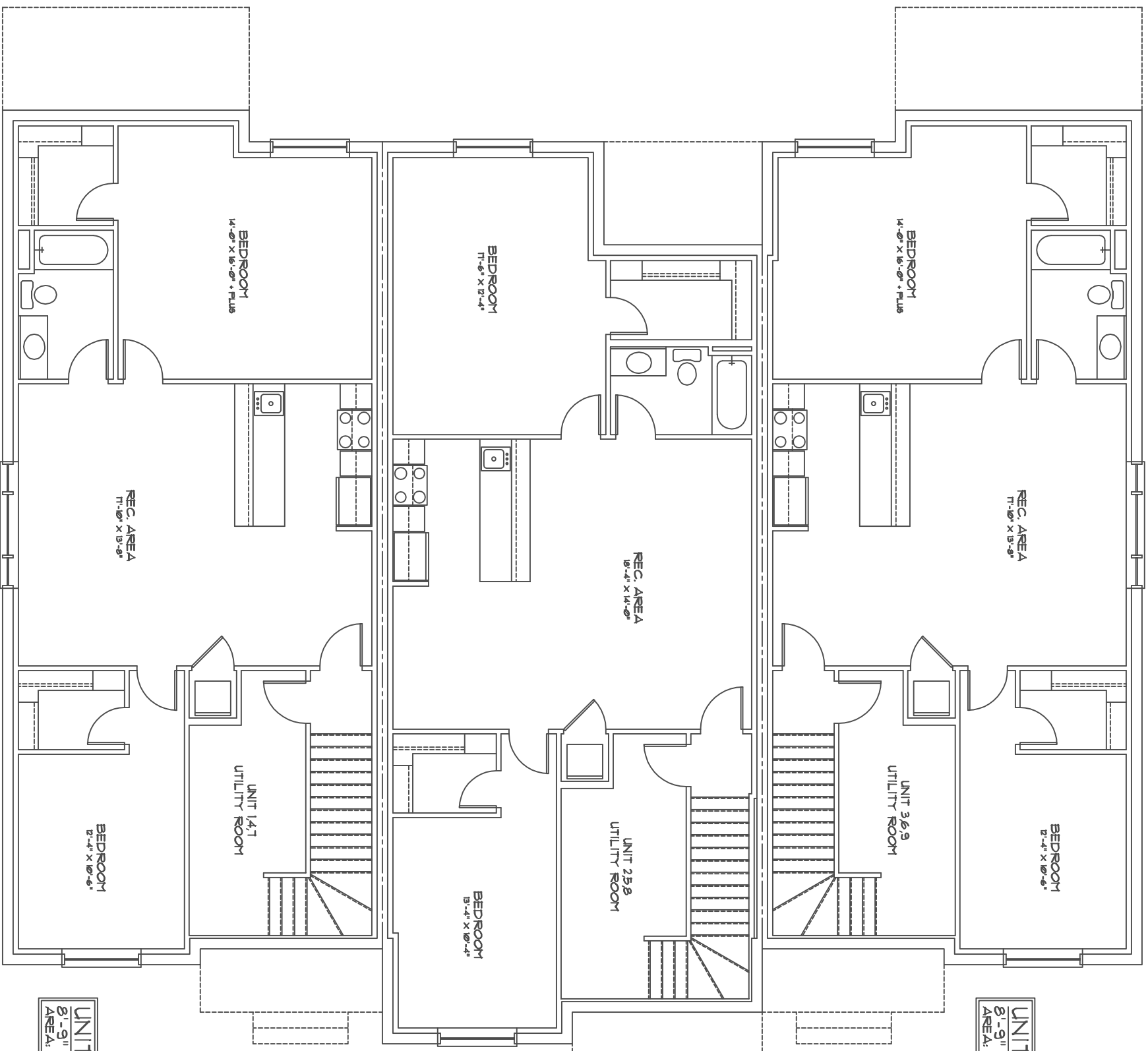


**UNIT 9**  
 9'-1" CEILING HEIGHT  
 AREA: 1285 SQFT.

**UNIT 8**  
 9'-1" CEILING HEIGHT  
 AREA: 1379 SQFT.

**UNIT 7**  
 9'-1" CEILING HEIGHT  
 AREA: 1285 SQFT.



UNIT 3 - BSMT.  
8'-9" CEILING HEIGHT  
AREA: 369 SQFT.

UNIT 2 - BSMT.  
8'-9" CEILING HEIGHT  
AREA: 362 SQFT.

UNIT 1 - BSMT.  
8'-9" CEILING HEIGHT  
AREA: 369 SQFT.